



By Appointment to
Her Majesty The Queen
Suppliers of Corporate
Uniforms and Workwear
MWUK t/a Alexandra

Alexandra

AUTUMN ESSENTIALS — Healthcare —



Build your uniform from head to toe

Not all healthcare workwear is the same. Alexandra design garments that suit the role and the environment in which they will be worn to ensure comfort, quality and practicality.

As well as offering you a full range of garments, accessories and footwear to protect you from head to toe, all Alexandra products are guaranteed for two years and are independently tested to meet our exacting standards of manufacture and performance.



Get smart with branding

Branding your workwear is a quick, convenient and cost effective way of enhancing the appearance of your team.

It is possible to convert any logo, company brand name or design into intricate, full-colour embroidery and place it onto a multitude of garments shown within this catalogue.

Don't have a logo? No problem!

You can have your company name embroidered onto your chosen workwear in a huge range of colours and typefaces and in a variety of positions on the garment.



Contents

Tunics and dresses	6 - 21, 24
Anti-microbial	21
Tabards	26, 37
Maternity	27
Trousers	28 - 29, 42
Scrubs	22 - 24, 48
Patient pyjamas	25
Cardigan	25

Accessories	30 - 31
Disposables	32 - 33
Chefswear	34 - 36
Aprons	36
Polo shirts	38 - 40
Fleeces and sweatshirts	41
Hi-vis	43
Footwear	44 - 45

Build your uniform from head to toe

Job role: Core nursing

As the largest supplier of nursing tunics in the UK, we know a thing or two about the importance of comfort and practicality in the clothes that nurses wear for work. Long trusted by the NHS and private healthcare organisations for quality and reliability, our tunics, dresses and trousers offer superior comfort and fit and are designed especially for the role.

Appearance is especially important to patients in core nursing roles. Both patients and their families need to be able to recognise nursing staff and to feel reassured that they are in professional hands. The traditional nursing dress or tunic and trouser combination does exactly that - it presents a highly respected image that requires no further explanation.



HP298 Zip front tunic
Page 7



“This new sweatshirt cardigan is so comfortable”

HP420 Women's sweatshirt cardigan
Page 25



LT200
Women's twin pleat trousers
Page 29

“Nurses walk an average 3.6 miles during a shift - choosing the right footwear is crucial”

FW516 Toffeln EziKlog
Page 44





“Every member of your team needs to be easy to recognise at a glance”

G103 Men's tunic
Page 8



“Alexandra has a range of accessories to complete your look”

Pages 30 - 31



Embroider it!

Embroidery is a fast and effective way to create instant, **quality branding** on your workwear.

Co-ordinating tunic and dress available in 34 colours



Pale blue/
white (PB)

Pale blue/
pale blue (SK)

Pale blue/
sailor navy
(HP298 ZX HP297 BX)

Peacock/
white (PK)

Metro blue/
white (ME)

Metro blue/
metro blue (MM)



Hospital blue/
white (HB)

Hospital blue/
sailor navy (HN)

Blade blue/
white (BB)

Royal box/
white (RO)

Sailor navy/
sailor navy (NN)

Sailor navy/
white (NA)



Sailor navy/
pale blue (NB)

Sailor navy/
yellow (NY)

Sailor navy/
red (NR)

Aqua/
white (AQ)

Aqua marine/
white (AM)

Turquoise/
white (TU)



Bottle green/
white (BO)

Yellow/
white (YE)
HP298 ONLY

Bright pink/
bright pink (BP)
HP298 ONLY
210gsm

Brown/
white (BR)
210gsm

Red/
sailor navy (RN)

Red/
red (RE)



Burgundy/
cream (BU)

Lavender/
white (LA)

Lilac/
white (LI)

Purple/white
(HP298 ES HP297 PU)

Purple/purple (PU)
HP298 ONLY

Pale grey/
white (PG)



Hospital grey/
white (HG)

Convoy grey/
white (GR)

Convoy grey/
red (G1)

Black/white
(HP298 EB HP297 BH)

TUNICS AND DRESSES



HP298 Women's tunic



HP298 Women's tunic

Concealed zip front • Two hip and chest pockets • Double action back and vents • 195gsm 65% polyester/35% cotton • Up to 60° wash • Suitable for industrial laundry • Back length: 75 - 81cm (increases with size) • Chest sizes 76 - 148cm • Size guide G



HP297 Zip front dress

Concealed zip front, step-in style • Two hip and chest pockets • Double action back and front skirt pleats • 195gsm 65% polyester/35% cotton • Up to 60° wash • Suitable for industrial laundry • Chest sizes 76 - 148cm • Lengths: Short (S) 100cm, Regular (R) 106cm, Tall (T) 112cm, Unhemmed (U) 122.5cm • Size guide G

G103 Men's tunic

available in 37 colours

G103 Men's tunic

- Smart, stylish and comfortable
- Concealed zip front
- Two hip pockets, one chest pen pocket
- Double action back and vents
- 195gsm (white garments 210gsm) 65% polyester/35% cotton
- Up to 60° wash
- Suitable for industrial laundry
- Back length: 76 - 80cm (increases with size)
- Chest sizes 80 - 140cm
- Size guide E



Open ended zip



Co-ordinates with **HP297 Zip front dress** and **HP298 Women's tunic** - available on pages 6 -7

Available in:





NM48 Men's lightweight tunic

Best selling styles in lighter weight fabrics

NF48 Women's lightweight tunic

- Contemporary cut • Concealed zip front • Two chest and hip pockets • Double action back and vents
- 145gsm 65% polyester/35% cotton • Up to 60° wash • Suitable for industrial laundry • Back length: 75 - 81cm (increases with size) • Chest sizes 76 - 148cm
- Size guide G



NM48 Men's lightweight tunic

- Lightweight • Concealed zip front • Two hip pockets, one chest pen pocket • Double action back and vents
- 145gsm 65% polyester/35% cotton • Up to 60° wash • Suitable for industrial laundry • Back length: 76 - 80cm (increases with size) • Chest sizes 80 - 140cm
- Size guide E

Available in:



White/white (WH) White/sailor navy (WN) White/bottle green (WG) Pale blue/white (PB) Hospital blue/white (HB) Royal box/white (RO) Sailor navy/white (SN) Sailor navy/red (NR) Aqua/white (AQ) Bottle green/white (BO) Burgundy/cream (BU) Lilac/white (LI) Purple/white (PU) Pale grey/white (PG) Black/white (BH)

Sharp styling and coordination



D313 Women's tunic

With open-ended zip front • Single action back • Two hip pockets, one chest pen pocket • 195gsm (white garments 210gsm) 65% polyester/35% cotton • Up to 60° wash • Suitable for industrial laundry
• Back length: 71 - 76cm (increases with size) • Chest sizes 76 - 148cm • Size guide G



D312 Zip front dress

With zip front • Single action back and skirt pleat • Two hip pockets, one chest pocket • Step-in style • 195gsm (white garments 210gsm) 65% polyester/35% cotton • Up to 60° wash • Suitable for industrial laundry
• Chest sizes 76 - 148cm • Lengths: Short (S) 100cm, Regular (R) 106cm, Tall (T) 112cm, Unhemmed (U) 122cm • Size guide G



+D312
available
in these
colours only

TUNICS AND DRESSES

Co-ordinating tunics and dress



NF51 Mandarin collar dress

V shaped neckline with contrast bound collar • Concealed front zip fastening • Two hip and chest pockets • Front kick pleats • 195gsm 65% polyester/35% cotton • Up to 60° wash • Suitable for industrial laundry • Chest sizes 76 - 148cm • Lengths: Short (S) 100cm, Regular (R) 106cm, Tall (T) 112cm, Unhemmed (U) 122cm • Size guide G



NF20 Women's mandarin collar tunic

Smart, stylish and functional • Concealed zip front • Two hip and chest pockets • Double action back and vents • 195gsm 65% polyester/35% cotton • Up to 60° wash • Suitable for industrial laundry • Back length: 75 - 81cm (increases with size) • Chest sizes 76 - 148cm • Size guide G

NM7 Men's mandarin collar tunic

Sophisticated design • Concealed zip front • Two hip pockets and one chest pen pocket • Double action back and vents • 195gsm 65% polyester/35% cotton • Up to 60° wash • Suitable for industrial laundry • Back length: 77 - 80cm (increases with size) • Sizes XS - 4XL • Size guide E

HO137 Women's lightweight stripe tunic



ST298 Women's stripe tunic

Woven stripe fabric • Concealed zip front • Two hip and chest pockets • Double action back • 180gsm 65% polyester/35% cotton • Up to 60° wash • Suitable for industrial laundry • Back length: 75 - 81cm (increases with size) • Chest sizes 76 - 148cm • Size guide **G**



ST297 Stripe dress

Woven stripe fabric • Concealed zip front • Two hip and chest pockets • Double action back, front and back skirt pleats • Step-in style • 180gsm 65% polyester/35% cotton • Up to 60° wash • Suitable for industrial laundry • Lengths: Short (S) 100cm, Regular (R) 106cm, Tall (T) 112cm, Unhemmed (U) 122cm • Chest sizes 76 - 148cm • Size guide **G**



Blue/white (BL)



Blue/sailor navy (ZH)



Blue/red (LR)



Navy/white (NA)



Aqua/white (AQ)



Lilac/white (LI)



Pale grey/white (PG)

TUNICS AND DRESSES



Blue/white (BL)



Navy/white (NA)



Aqua/white (AQ)



Lilac/white (LI)



Pale grey/white (PG)

ST313 Women's stripe tunic

Long-lasting, lightweight woven stripe • Open ended zip front • Single action back and pleat • Two hip pockets, one chest pocket • 180gsm 65% polyester/35% cotton • Up to 60° wash • Suitable for industrial laundry • Back length: 71 - 76cm (increases with size) • Chest sizes 76 - 148cm • Size guide G

ST312 Stripe dress

Long-lasting, lightweight woven stripe • Zip front, step-in style • Single action back and pleat • Two hip pockets, one chest pocket • Step-in style • 180gsm 65% polyester/35% cotton • Up to 60° wash • Suitable for industrial laundry • Chest sizes 76 - 148cm • Lengths: Short (S) 100cm, Regular (R) 106cm, Tall (T) 112cm, Unhemmed (U) 122cm • Size guide G



NM173 Men's stripe tunic

Woven stripe fabric • Concealed zip front • Two hip pockets, one chest pen pocket • Double action back • 180gsm 65% polyester/35% cotton • Up to 60° wash • Suitable for industrial laundry • Back length: 76 - 80cm (increases with size) • Chest sizes 80 - 140cm • Size guide E



HO137 Women's lightweight stripe tunic

With comfortable single action back and pleat • Concealed zip front • Two hip pockets and chest pen pocket • 150gsm 65% polyester/35% cotton • Up to 60° wash • Suitable for industrial laundry • Back length: 71 - 76cm (increases with size) • Chest sizes 80 - 148cm • Size guide G



Blue/white (KC)



Blue/sailor navy (BX)



Blue/red (L9)



Navy/white (KF)



Blue/white (BW)



Navy/sailor navy (NS)



Aqua/bottle green (AB)



Lilac/lilac (LI)



Aqua/white (OK)



Lilac/white (M6)



Pale grey/white (OM)



H212W Women's trim tunic

Concealed open-ended zip front • Two hip and chest pockets
 • Double action back • 210gsm 65% polyester/35% cotton • Up to 60° wash
 • Suitable for industrial laundry • Back length: 74 - 78cm (increases with size) • Chest sizes 80 - 148cm • Size guide **G**



HP369W Women's tunic

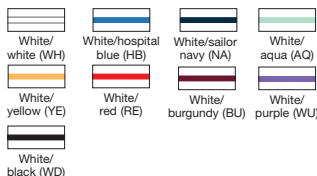
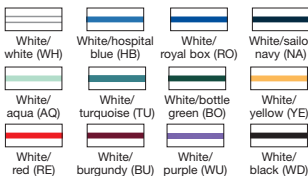
Concealed zip front • Two hip and chest pockets • Double action back • 210gsm 65% polyester/35% cotton • Up to 60° wash
 • Suitable for industrial laundry • Back length: 75 - 81cm (increases with size) • Chest sizes 80 - 148cm • Size guide **G**

HP370W Zip front dress

Concealed zip front, step-in style • Two hip and chest pockets • Double action back, front and back skirt pleats • 210gsm 65% polyester/35% cotton • Up to 60° wash
 • Suitable for industrial laundry • Length: 117cm unhemmed (U) • Chest sizes 80 - 148cm • Size guide **G**

H152W Women's comfort stretch tunic

With double action back • Concealed zip front • Two hip pockets, one waterproof lined
 • Waterproof lined chest pocket • 220gsm 65% polyester/35% cotton • Up to 60° wash
 • Suitable for industrial laundry • Back length: 74 - 78cm (increases with size) • Chest sizes 80 - 148cm • Size guide **G**



Contemporary print, traditional style

Concealed zip front, step-in style • Two hip and chest pockets
 • Double action back • 195gsm 65% polyester/35% cotton
 • Up to 60° wash • Suitable for industrial laundry

HE227 Spot dress

Front and back skirt pleats • Chest sizes 76 - 148cm
 • Length: 119.5cm unhemmed • Size guide G

HF719 Women's spot tunic

Back length: 75 - 82cm (increases with sizes)
 • Chest sizes 76 - 148cm • Size guide G



Smart appearance with a softer touch

Soft brushed fabric • Concealed zip front • Two hip pockets, one with waterproof pen pocket • Double action back • 210gsm 65% polyester/35% cotton • Up to 60° wash • Suitable for industrial laundry

D308 Soft-brushed dress

Chest sizes 80 - 148cm • Lengths: Short (S) 100cm, Regular (R) 106cm, Tall (T) 112cm, Unhemmed (U) 122cm • Size guide G

D309 Women's soft-brushed tunic

Back length: 71 - 76cm (increases with size) • Chest sizes 76 - 148cm • Size guide G



Contemporary asymmetrical design



Contrast trim on pockets



Concealed front zip fastening



NF54 Women's contrast trim tunic

V shaped neckline with shaped contrast trim • Concealed front zip fastening • Two hip pockets with shaped contrast pocket top detail • Double action back • 195gsm (white garments 210gsm) 65% polyester/35% cotton • Up to 60° wash • Suitable for industrial laundry • Back length: 72 - 78cm (increases with size) • Sizes 6 - 34 • Size guide G



White/sailor navy (WN)

Pale blue/white (PB)

Hospital blue/white (HB)

Royal box/white (RO)

Sailor navy/white (NW)

Sailor navy/red (NR)

Aqua/white (AC)

Bottle green/white (BO)

Burgundy/cream (BU)

Lilac/white (LI)

Purple/lilac (I3)

Purple/lilac (I3)



Sophisticated styling

NF191 Women's asymmetric tunic

With flattering front panel seam • Concealed zip fastening • Two hip pockets • Double action back • 195gsm 65% polyester/35% cotton • Up to 60° wash • Suitable for industrial laundry • Back length: 74 - 82cm (increases with size) • Chest sizes 76 - 148cm • Size guide G



Concealed zip fastening



Pale blue/white (PB)

Metro blue/sailor navy (MV)

Hospital blue/white (HB)

Sailor navy/white (NA)

Sailor navy/metro blue (OH)

Lilac/purple (JN)

Purple/lilac (I3)

Build your uniform from head to toe

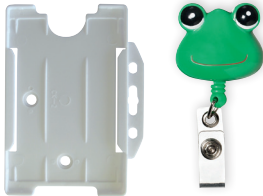
Job role: Caring

Caring roles often involve even more physical work than core nursing - and just as much walking, so your workwear needs to be practical and hardworking as well as allowing you to move comfortably.

The traditional nursing uniform can be perceived as too clinical, particularly by children, so choose garments that are a little more contemporary.

Colour is important in a care home setting: research has shown that older people find it easier to recognise brighter colours, particularly those who suffer with dementia or impaired eyesight. Being able to see where their carers are can provide important reassurance.

“Alexandra have the right accessories to help you do your job efficiently”



NF191 Women's asymmetric tunic
Page 16



W40 Essential women's flat front trousers
Page 29

FW537 Toffeln UltraLite clogs
Page 44



Embroider it!

Embroidery is a fast and effective way to create instant, **quality branding** on your workwear.









White/white
(WH)



Pale blue/white
(BW)



Royal box/white
(RH)



Sailor navy/white
(NZ)



AM30 Men's anti-microbial tunic

With concealed stud front • Double action back • Two hip pockets, one chest pen pocket • 210gsm 65% polyester/35% cotton • Up to 60° wash • Suitable for industrial laundry • Back length: 76 - 80cm (increases with size) • Chest sizes 84 - 140cm • Size guide E

AM32 Women's anti-microbial tunic

With double action back for extra comfort • Concealed zip front • Two hip and chest pockets • 210gsm 65% polyester/35% cotton • Up to 60° wash • Suitable for industrial laundry • Back length: 75 - 81cm (increases with size) • Chest sizes 80 - 136cm • Size guide G

AM31 Anti-microbial dress

Concealed zip front, step-in style • Double action back, front and back skirt pleats • Two hip and chest pockets • 210gsm 65% polyester/35% cotton • Up to 60° wash • Suitable for industrial laundry • Length: 122cm unhemmed (U) • Chest sizes 80 - 136cm • Size guide G

AM34 Men's anti-microbial trousers

With smart sewn-in creases • Zip fly with hook and bar • Flat front and belt loops • Two hip pockets, one back pocket • 210gsm 65% polyester/35% cotton • Up to 60° wash • Suitable for industrial laundry • Inside leg: Regular (R) 31ins, Tall (T) 33ins • Waist sizes 76 - 116cm • Size guide E



Navy
(NA)



Sailor navy
(SN)



AM33 Women's anti-microbial trousers

With smart sewn-in creases and comfortable elasticated back • Zip fly with hook and bar • 210gsm 65% polyester/35% cotton • Up to 60° wash • Suitable for industrial laundry • Inside leg: hemmed 32ins • Sizes 10 - 26 • Size guide G



Navy
(NA)



Sailor navy
(SN)





D397 Unisex scrub tunic

Great value and lightweight • Unisex • Two hip patch pockets, one chest pocket • Side vents • 145gsm 65% polyester/35% cotton • Up to 60° wash • Suitable for industrial laundry • Back length: 74cm • Sizes XS - 4XL • Size guide A



NF26 Women's scrub tunic

Great value and lightweight • Female fit • Two hip patch pockets • Side vents • 145gsm 65% polyester/35% cotton • Up to 60° wash • Suitable for industrial laundry • Back length: 74cm • Sizes XS - 4XL • Size guide G



D398 Scrub trousers

Lightweight with comfortable elasticated drawcord waist • Unisex • Back pocket • 145gsm 65% polyester/35% cotton • Up to 60° wash • Suitable for industrial laundry • Inside leg: Short (S) 29ins, Regular (R) 31ins, Unhemmed (U) 38ins • Sizes XS - 4XL • Size guide A



NU164 Smart scrub tunic

Durable and easycare with practical vanity flap • Unisex • Two hip patch pockets • Inset chest pocket with waterproof lining • Side vents • 195gsm 65% polyester/35% cotton • Up to 60° wash • Suitable for industrial laundry • Sizes XS - 4XL • Size guide A



NU165 Smart scrub trousers

Durable and easycare with comfortable drawcord waist • Unisex • 195gsm 65% polyester/35% cotton • Up to 60° wash • Suitable for industrial laundry • Inside leg: Short (S) 29ins, Regular (R) 31ins, Unhemmed (U) 38ins • Sizes XS - 4XL • Size guide A





UT404 Smart scrub tunic

new colours



Royal box (0049)



Caribbean blue (CA)



Biscuit (0219)



Amethyst (AY)

new colours



Royal box (RB)



Caribbean blue (CA)



Biscuit (BI)



Amethyst (AY)

UT404 Smart scrub tunic

With side slits for freedom of movement • Unisex • V-neck • One chest pocket • Two lower patch pockets • 195gsm 65% polyester/35% cotton • Up to 60° wash • Suitable for industrial laundry • Sizes XS - 4XL • Size guide A



White (0130)



Sky blue (0001)



Hospital blue (0014)



Bright royal (0050)



Sailor navy (0003)



Bottle green (0002)



Maroon (0028)



Lilac (0058)



Purple (PU)



Hospital grey (0033)



White (0036)



Sky blue (0053)



Hospital blue (0004)



Bright royal (0001)



Sailor navy (0002)



Bottle green (0011)



Maroon (0008)



Lilac (0052)



Purple (PU)



Hospital grey (0012)

UB453 Smart scrub trousers

With fully elasticated waist for comfort • Unisex • Two hip pockets • Drawcord waist • 195gsm 65% polyester/35% cotton • Up to 85° wash • Suitable for industrial laundry • Inside leg: Short (S) 31ins, Regular (R) 33ins, Tall (T) 36ins, Unhemmed (U) 38ins • Sizes XS - 4XL • Size guide A



NF93 Piggy print tunic



Piggy print (GR)



Piggy print (GR)



Piggy print (GR)

NU590 Piggy print tabard

- Piggy print design on front and back
- Front pouch pocket • Adjustable side stud fastenings • 195gsm 65% polyester/35% cotton • Up to 60° wash • Length: 70cm
- Sizes S - XL • Size guide S

NF93 Women's piggy print tunic

- Piggy and sheep design on front and back
- Contemporary cut • Concealed zip front
- Two hip and chest pockets • Double action back and vents • 195gsm 65% polyester/35% cotton • Up to 60° wash
- Back length: 75 - 81cm (increases with size)
- Chest sizes 76 - 136cm • Size guide G

NU93 Piggy print scrub tunic

- Piggy and sheep design on front and back
- Unisex • Two hip pockets, one chest pocket
- Side vents • 195gsm 65% polyester/35% cotton • Up to 60° wash • Back length: 74cm
- Sizes XS - 2XL • Size guide A



NU322 Patient pyjama top



Sailor navy (SN)



Sailor navy (SN)

new



Black (BK)

Sailor navy (SN)

NU322 Patient pyjama top

With front shoulder openings to allow medical access for central lines • Unisex • V-neck • Non metallic stud fastening • D piece in back • Different coloured stitching on D piece to indicate sizes • 115gsm 100% polyester • Up to 60° wash • Suitable for industrial laundry • Sizes XS - 2XL • Size guide A

NU324 Patient pyjama trousers

With elasticated waistband and internal drawcord • Unisex • D piece in back • Different coloured stitching on D piece to indicate sizes • 115gsm 100% polyester • Up to 60° wash • Suitable for industrial laundry • Inside leg: Regular (R) 31ins, Tall (T) 36ins • Sizes XS - 2XL • Size guide A

HP420 Women's sweatshirt cardigan

Button front • V-neck • Two lower patch front pockets • Ribbed cuffs (not turn back) • 45% acrylic/40% cotton/15% polyester • Up to 40° wash • Chest sizes 28 - 56ins • Back length 70 - 84cm (increases with size) • Size guide G



NU71 Drug round tabard



Red (RE)

Specifically designed
to help in the safe
dispensing of drugs

NU71 Drug round tabard

- Durable and comfortable tabard with 'Drug round' embroidery on front and back
- Adjustable side stud fastenings
- 195gsm 65% polyester/35% cotton
- Up to 60° wash
- Sizes S - 2XL
- Length: 70cm
- Size guide S



Black (BK)



Amethyst (AY)

NF52 Maternity tunic

Concealed zip front • Two hip and chest pockets • Double action back and vents
 • 195gsm 65% polyester/35% cotton • Up to 60° wash • Suitable for industrial laundry
 • Back length: 75 - 81cm (increases with size) • Sizes 6 - 26 • Size guide G



NF53 Maternity dress

Concealed zip front • Two hip and chest pockets • Double action back, front and back skirt pleats • 195gsm 65% polyester/35% cotton • Up to 60° wash -
 • Suitable for industrial laundry
 • Unhemmed • Back length: 112.5cm
 • Sizes 6 - 26 • Size guide G

NF30 Maternity easycare wrap tunic

Asymmetrical with distinctive button fastening detail • Mandarin collar • Two concealed hip pockets • Single action back
 • Side vents • 200gsm 100% soft touch polyester • Up to 40° wash • Back length: 72 - 78cm (increases with size) • Sizes 8 - 26 • Size guide G



Sailor navy (0001)



Bottle green/navy (0004) (U) only



Black (0002)

FM229 Maternity trousers

Comfort-fit with elasticated waist • Soft jersey front panel • Free hemming tape for unhemmed • 195gsm 65% polyester/35% cotton • Up to 60° wash • Inside leg: Short (S) 28ins, Regular (R) 30ins, Tall (L) 32ins, Unhemmed (U) 33ins • Bottle green unhemmed only • Sizes 6 - 26 • Size guide G

NF55 Maternity stripe tunic

Woven stripe fabric with concealed zip front • Two hip and chest pockets • Double action back and vents • 180gsm 65% polyester/35% cotton • Up to 60° wash • Suitable for industrial laundry • Back length: 75 - 81cm (increases with size) • Sizes 6 - 26 • Size guide G



NF56 Maternity stripe dress

Woven stripe fabric with concealed zip front • Two hip and chest pockets • Double action back, front and back skirt pleats • 180gsm 65% polyester/35% cotton • Up to 60° wash • Suitable for industrial laundry • Back length: 112.5cm • Unhemmed • Sizes 6 - 26 • Size guide G



new

Durable and practical



NM30 Essential men's trousers

With smart sewn-in creases • Zip fly with hook and bar • Two hip pockets and one back pocket • Flat front and belt loops • 245gsm 65% polyester/35% cotton • Up to 60° wash • Suitable for industrial laundry

- Waist sizes 28 - 54ins • Inside leg: Short (S) 29ins, Regular (R) 31ins, Tall (T) 33ins Extra tall (A) 36ins • Size guide A



Healthcare essential



MT600 Men's twin pleat trousers

With smart sewn-in creases • Zip fly with hook and bar • Belt loops • Two hip pockets • 245gsm 65% polyester/35% cotton • Up to 60° wash • Suitable for industrial laundry

- Inside leg: Short (S) 29ins, Regular (R) 31ins, Tall (T) 33ins, Unhemmed (U) 37ins • Waist sizes 26 - 46ins • Size guide A



Hidden elastication



NM27 Men's concealed elasticated waist trousers

Hidden elasticated waist • Flat front • Two hip pockets • Zip fly with concealed hook and bar • 195gsm 65% polyester/35% cotton • Up to 60° wash • Suitable for industrial laundry • Inside leg: Regular (R) 31ins, Tall (T) 33ins, Extra tall (A) 36ins • Waist sizes 30 - 42ins • Size guide A



Hidden elasticated waist into side seam for ease of movement without bulk

Best ever comfort fit

W40 Essential women's trousers

With elasticated back waistband for extra comfort • Zip fly with hook and bar • No pockets • Sewn-in creases • 195sm 65% polyester/35% cotton • Up to 60° wash • Suitable for industrial laundry • Inside leg: Short (S) 27ins, Regular (R) 29ins, Tall (T) 31ins, Extra tall (A) 33ins • Sizes 8 - 26 • Size guide G



White* (WH) Pale blue (PB) Hospital blue (HB) Royal box (RO) Navy (NA)
Sailor navy (SN) Bottle green (BG) Grey* (GR) Burgundy (BU) Black (BK)

*210gsm 65% polyester/
35% cotton

Designed for extra comfort

LT200 Women's twin pleat trousers

With elasticated back waistband for extra comfort • Zip fly with button • Sewn-in creases • Two hip pockets • Free hemming tape for unhemmed • 195gsm 65%polyester/35% cotton • Up to 60° wash • Inside leg: Short (S) 28ins, Regular (R) 30ins, Tall (T) 32ins, Unhemmed (U) 33ins • Sizes 6 - 26 • Size guide G



Sailor navy (0001) Bottle green (0140) Maroon (0112) Black (0011)

Extra ease of movement

NF27 Women's concealed elasticated waist trousers

Hidden elasticated waist • Flat front • Two hip pockets • Zip fly with concealed hook and bar • 195gsm 65% polyester/35% cotton • Up to 60° wash • Suitable for industrial laundry • Inside leg: Short (S) 27ins, Regular (R) 29ins, Tall (T) 31ins, Extra tall (A) 33ins • Sizes 6 - 26 • Size guide G



Sailor navy (SN) Black (BK)



Hidden elasticated waist into side seam for ease of movement without bulk



Caterpillar fob watch

Pin-on • Gel/silicon rubber

NU91 Caterpillar (GR)



Zebra fob watch

Pin-on • Gel/silicon rubber

NU91 Zebra (WH)



Pink print fob watch

Pin-on • Gel/silicon rubber

NU91 Pink (BP)



Leopard fob watch

Pin-on • Gel/silicon rubber

NU91 Leopard (YE)



NU320 Plain dial fob watch

Pin-on • Gel/silicon rubber



NU23 Smiley face fob watch

Pin-on • Gel/silicon rubber



NU29 Illuminated dial fob watch

Pin-on • Gel/silicon rubber



White (WH)

Red (RE)

Purple (PU)

NU22 Heart shaped fob watch

Pin-on • Gel/silicon rubber



White (WH)

Green (GR)

Pink (PI)

Purple (PU)

Grey (GY)

Black (BK)

NU98 Metal fob watch

Pin-on • Metal/plastic



Black (BK)

NU25 Metal belt watch

With carabiner clip • Luminous dial • Clip-on



Silver (SI)

NU28 Metal belt watch

With carabiner clip • Luminous dial • Clip-on



Silver (SI)

HP1 Classic fob watch

Water resistant • 1 year manufacturing guarantee
• Pin-on • Stainless steel



Silver (SI)

NU24 Metal smiley face fob watch

With silver finish • Pin-on

FOB WATCHES AND ID



White (WH)

Navy (NA)

Black (BK)

NU985 Lanyard

Ideal for holding ID cards, name badges or keys • Detachable carabiner • Breakaway closure eliminates choking hazards • Safety neck strap • Size 48 x 2.5cm



White (WH)

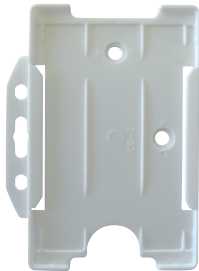
Navy (NA)

Pink (PI)

Black (BK)

NU65 15mm flat lanyard

Ideal for holding ID cards, name badges or keys • Breakaway closure eliminates choking hazard • Safety neck strap • Size 43 x 1.5cm



White (WH)



Green (GR)

Red (RE)

NU213 ID badge holder

Rigid design • Slot for strap clip • Holes for necklace • Suitable for credit card size badges



Blue (BL)

NU986 Recoil clip keyring

Keep badges or keys safe at hand • Carabiner clip • Autowind cord 30ins (75cm)



Silver (SI)

Retractable keyring

Ideal for holding badges or keys • Hook-on clip • Autowind cord

NU68 Frog

NU67 Ladybird

NU987 Recoil clip keyring

Keep badges safe at hand • Back clip • Autowind cord 30ins (75cm)



NS61 Vinyl powder free gloves

Suitable for a variety of non-sterile applications

- Ideal for latex allergy sufferers • 100% polyvinyl chloride (PVC)
- Powder free examination gloves • Non- textured surface • Beaded cuff to aid donning • Food safe glove • 100 gloves per box • **Medical grade AQL 1.5 • CE medical devices class 1 • Conforms to EN455**
- Sizes S - XL



NU88 Synthetic powder and latex free vinyl gloves

Extra stretchy (white polyvinyl chloride) glove that offers a more superior fit and comfort than a standard vinyl glove • Contains no natural rubber latex, ideal for latex allergy sufferers • 100% polyvinyl chloride (PVC) • Straight vinyl dip with polyurethane coating • 100 gloves per box • **Medical grade AQL 1.5 • CE medical devices class 1 • Conforms to EN455 • Sizes S - XL**



GL4 Latex powder free gloves

Provides the user with extra grip during procedures and applications; this glove is suitable for a variety of non-sterile applications • Powder free polymer coated examination glove • Ambidextrous • Textured fingers and palm area for enhanced grip • Beaded cuff to aid donning • 100 gloves per box • **Medical grade AQL 1.5 • CE medical devices class 1 • Conforms to EN455**

- Sizes XS - XL



NU90 Nitrile powder free gloves

Specifically designed to provide a supple thin film barrier that enhances dexterity and sensitivity • Suitable for latex allergy sufferers • Powder free examination gloves • Finger textured with light grip • Beaded cuff to aid donning • 200 gloves per box • **Medical grade AQL 1.5 • CE medical devices class 1 • Conforms to EN455 • Sizes S - XL**



NU251 Vitrile powder free gloves

The vi-ni gloves are softer, more flexible, plus have a greater sensitivity and less cost than nitrile • Manufactured from a blend of vinyl and nitrile compounds • Suitable for latex allergy sufferers • Powder free examination gloves • Smooth surface • Beaded cuff to aid donning • Food safe gloves **EC 1935/2004** and European Regulation **10/2011** • 100 gloves per box • **Medical grade AQL 1.5 • CE medical devices class 1 • Conforms to EN455 • Sizes S - XL**



NU203 Nitrile powder free gloves

From food handling to engineering, these versatile gloves are sure to suit the task at hand • Powder free • Latex free • Micro textured • 100 gloves per box • **Medical grade AQL 1.5 • Conforms to EN455**

- Sizes S - XL



NU206 Glove box dispenser

Compact and hygienic • Suitable for all of our glove boxes • One box capacity • Wall fixing • Washable clear plastic • Gloves not included



NU207 Multi glove box dispenser

Compact and hygienic • Suitable for all of our glove boxes • Four box capacity • Wall fixing • Washable clear plastic • Gloves not included



NU295 Gojo TFX touch free dispenser

Product dispensed via sensor • Approx 30,000 uses from three C-size batteries (included) • Fully RoHS compliant • Use with refill NU302



NU296 Purell TFX touch free dispenser

Product dispensed via sensor • Approx 30,000 uses from three C-size batteries (included) • Fully RoHS compliant • Use with refill NU293



NU302 Gojo antibacterial foam soap

Smooth foam with germ killing power • Fragrance free • Conforms to EN1040 and EN13727 • Use with dispenser NU295 • 1200ml refill



NU293 Purell advanced hygienic hand rub

No water or towels needed • Fragrance and dye free • Conditions skin with natural moisturiser • Conforms to EN1500, EN1040, EN12054, yeasticidal to EN1275 • Use with dispenser NU296 • 1200ml refill



NU304 Gojo hand medic professional skin conditioner bottle

No greasy after feel • Silicone and fragrance free • 59ml bottle

NU288 Purell advanced hygienic hand rub

No water or towels needed • Fragrance and dye free • Natural moisturiser conditions skin • Conforms to EN1500, EN1040, EN12054, yeasticidal to EN1275 • 350ml pump bottle

NU289 Purell hygienic hand rub

Personal pump, use on lightly soiled hands • Fragrance and dye free • Conditions skin with natural moisturiser • Conforms to EN1500, EN1040, EN12054, yeasticidal to EN1275 • Use with clip NU307 • 60ml pump bottle

NU307 Purell personal gear retractable clip

Attachable to make hand sanitising more accessible • For use with personal pump NU289



Bold contrast design



NU572 Chef's coloured contrast jacket

Black collar and cuff facings • Unisex • Concealed asymmetric stud front fastening with contrast black piping on edge
 • Back yoke for a comfortable shoulder fit • Contrast black piping across back and sleeves • Roll up sleeve with stud tab fastening • 195gsm 65% polyester/35% cotton • Up to 60° wash • Suitable for industrial laundry • Back length: 72 - 79cm (increases with size) • Sizes XS - 4XL • Size guide A



Sleeve stud tab fastening



White/black (WD)
210gsm



Royal box/black (RO)



Red/black (RE)



Grey/black (GY)



Black (BK)



Black/white (BW)

Royal/white (WB)



Blue/white (BL)

NU965 Chef's trousers

Dark fabric helps hide stains • Unisex
 • Elasticated drawstring waist • Two pockets
 • 195gsm 65% polyester/35% cotton • Up to 60° wash • Suitable for industrial laundry
 • Inside leg: 34ins unhemmed (U) • Sizes XS - 4XL • Size guide A

2567 Chef's check trousers

Checked print • Unisex • Elasticated waist
 • Two pockets • Zip fly • 245gsm 65% polyester/35% cotton • Up to 40° wash
 • Inside leg: 31ins hemmed • Sizes XS - 4XL
 • Size guide A

W130 Women's chef's gingham trousers

Designed to be more comfortable for female shapes • Woven check • One back pocket
 • Elasticated back • 190gsm 100% pre-shrunk cotton • Up to 60° wash • Suitable for industrial laundry • Inside leg: 32ins hemmed
 • Sizes 8 - 26 • Size guide A



NF575 Women's chef's jacket



Black (BK)

White (WH)



White/black (WD)



White (WH)

NU168 Long sleeved stud fastening chef's jacket

Easy fastening, contemporary design

- Unisex • Mandarin collar • D piece in neck
- Reversible stud fastening • 275gsm moisture wicking fabric 50% cotton/50% polyester
- Up to 60° wash • Suitable for industrial laundry
- Back length: 73 - 80cm (increases with size)
- Sizes XS - 4XL • Size guide S

NU573 Contrast panel chef's jacket

Mandarin collar • Unisex • Black moisture wicking mesh side panels and underarms

- Double breasted front for two way fastening
- Button and concealed stud front fastening
- Supplied with 10 detachable plastic buttons (replacement buttons SH746 page 98)
- Two button tape holders
- Sleeve pocket with central division
- 195gsm 65% polyester/35% cotton
- Up to 60° wash • Suitable for industrial laundry
- Centre back length: 69 - 76cm (increases with size)
- Sizes XS - 4XL
- Size guide S

NF575 Women's chef's jacket

Flattering female fit • Mandarin collar

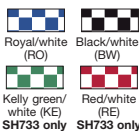
- Distinctive contrast lilac inner collar, cuff facing and centre front edge piping
- Roll up sleeve with stud tab fastening
- 215gsm moisture wicking fabric 50% cotton/50% polyester
- Up to 60° wash • Suitable for industrial laundry
- Back length: 74.5 - 81.5cm (increases with size)
- Sizes XS - 2XL
- Size guide G



Check skull cap

SH733 210gsm 100% cotton with Teflon coating • Up to 40° wash • One size

2568 195gsm 65% polyester/35% cotton • Up to 85° wash • One size



2406 Skull cap

195gsm 65% polyester/35% cotton • Up to 85° wash • One size - elasticated back



Skull cap

CZ22 Black (BK) • 100% satin cotton drill • Up to 40° wash • Sizes S - L

CZ23 White (WH) • 100% satin cotton drill • Up to 40° wash • Sizes S - L

W470 White (WH) • 100% cotton • Up to 60° wash • Sizes S - L

NG24 Blue/white (BL) • 100% cotton wovwn check • Up to 85° wash • Sizes S - L

Kerchief

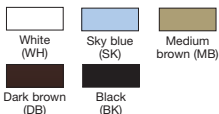
One size

2405 195gsm 65% polyester/35% cotton • Up to 85° wash



W376 Hairnet

Vital kitchen hygiene • Metal detectable • Sold in packs of 50 • 90% nylon/10% elastomeric • One size



W128 Bib apron

With contrasting white halter and tie • Without pocket • 195gsm 65% polyester/35% cotton • Up to 60° wash • Length: 92cm • One size

Bib apron

Classic style apron • Co-ordinating self fabric halter and ties • 195gsm 65% polyester/35% cotton • Up to 85° wash • Length: 92cm • One size

W691 without pocket

NU691 with pocket

APRONS AND TABARDS



W112 Easycare tabard with pocket



W92 Easycare tabard without pocket

Adjustable side stud fastenings • 195gsm 65% polyester/35% cotton
 • Up to 85° wash • Suitable for industrial laundry • Sizes S - XL
 • Length: 70cm • Size guide S

W112 Easycare tabard with pocket

With front pouch pocket • Adjustable side stud fastenings •
 195gsm 65% polyester/35% cotton • Up to 85° wash • Suitable for
 industrial laundry • Sizes S - XL • Length: 70cm • Size guide S



White (WH)

Pale blue (PB)

Royal box (RO)

Hospital blue (HB)

Navy (NA)

Aqua (AO)

Kelly green (KE)

Bottle green (BO)



Yellow (YE)



Pale pink (PI)
W112 only



Bright pink (BP)



Red (RE)



Burgundy (BU)



Lilac (LI)



Black piped white
(BK)



Black (BB)

NM231 Polo shirt

Our **improved**, ever popular polo shirt

Polo shirt

Contains cotton for comfort and polyester for durability • Unisex
• Ribbed collar and cuffs • Three button front placket • 210gsm
65% polyester/35% cotton • Up to 60° wash

NM231 Unisex • Sizes S - 5XL • Size guide A

NF231 Women's • Sizes XS - 2XL • Size guide G



Available in:

⁺NF231 available in these colours only



White⁺ (WH) Pale blue⁺ (PB) Peacock⁺ (PK) Hospital blue⁺ (HB) Royal box⁺ (RO) Sailor navy⁺ (SN) Navy⁺ (NA) Aqua (AQ) Jade (JA) Kelly green (KE) Bottle green⁺ (BO) Yellow (YE)



Gold (GO) Orange (OR) Olive⁺ (OL) Chocolate⁺ (C1) Bright pink⁺ (BP) Red⁺ (RE) Burgundy⁺ (BU) Lilac (LI) Purple⁺ (PU) Pale grey (PG) Charcoal⁺ (CH) Black⁺ (BK)

Build your uniform from head to toe

Job role: Porter

As a key member of your customer-facing team, porters need to look every bit as professional and comfortably dressed as your frontline nursing staff.

A polo shirt is a great choice - informal but professional and easy to identify - especially with the addition of embroidered branding.

Protect feet from fatigue, injury or slips with our range of supremely comfortable and durable footwear.

NM231 Polo shirt
Page 38
NU985 Lanyard
and **NU213** ID
badge holder
Page 31



“Lanyards, ID holders and a fob watch complete the look.”



NU28
Metal belt
watch
Page 30

NM30
Essential
men's
trousers
Page 28

NU289
Purell
hygienic
hand rub
Page 33

FW500
Blackrock
safety shoe
Page 45



Embroider it!

Embroidery is a fast and effective way to create instant, **quality branding** on your workwear.



Workwear polo shirt

Raglan sleeves for a smart appearance • Anti roll ribbed collar and cuffs (NM168 only) • Three button placket • 240gsm 50% cotton/50% polyester • Up to 40° wash • Men's sizes S - 3XL, women's sizes XS - 2XL

NM168 Men's • Size guide A

NF189 Women's • Size guide G

NU373 Long sleeved polo shirt

A warmer version of our best selling polo shirt • Unisex • Ribbed collar and cuffs • Three button placket • 195gsm 65% polyester/35% cotton • Up to 40° wash • Sizes XS - 3XL • Size guide A



W605 Stud front polo shirt

Hard working in durable polyester • Unisex • Short sleeved • Three button placket • Side vents • 195gsm 100% polyester • Up to 60° wash • Sizes S - 3XL • Size guide A

JX58 Ultimate cotton polo shirt

Unisex • Horn coloured buttons • Three button placket • 245gsm 100% cotton • Up to 40° wash • Sizes S - 2XL • Size guide A

POLO SHIRTS, FLEECES AND SWEATSHIRTS

Hardwearing, functional and lightweight



Anti-pill fleece

Warm and versatile • Full zippered front • Two zip hip pockets • Elasticated drawcord hem with concealed stopper • Elasticated cuffs • 300gsm 100% polyester • Up to 40° wash

NG19 Men's fit • Back length: 72 - 74cm (increases with size)
• Sizes XS - 3XL • Size guide A

NF19 Women's fit • Back length: 63 - 73cm (increases with size)
• Sizes XS - 2XL • Size guide G



JH1 Hoodie

Brilliantly simple over the head design • Unisex • Double fabric hood
• Self coloured draw cords • Kangaroo pouch pocket • Ribbed cuff and hem • 280gsm 80% cotton/20% polyester • Up to 40° wash
• Sizes S - 2XL • Size guide A

W232 Sweatshirt

Ribbed cuffs, neck and hem • Unisex • 280gsm 60% polyester/40% cotton • Up to 40° wash • Sizes XS - 3XL • Size guide A

Order dark navy to co-ordinate with sailor navy workwear.
Order navy to co-ordinate with navy workwear.

Alexandra

new



Male fit

Female fit

Essential kneepad trousers

Multipurpose trousers for use with the GT113 knee pads • Five pockets
• Mobile phone pocket with angled flap • Concealed Velcro closure
• Two knee pad pockets • Concealed zip fly front fastening • Adjustable waistband • 245gsm 65% polyester/35% cotton • Up to 60° wash
• Suitable for industrial laundry

NM530 Men's • Waist sizes 28 - 54ins • Inside leg: Short (S) 29ins, Regular (R) 31ins, Tall (T) 33ins, Extra tall (A) 36ins • Size guide **A**

NF530 Women's • Sizes 6 - 26 • Inside leg: Short (S) 27ins, Regular (R) 29ins, Tall (T) 31ins, Extra tall (A) 33ins • Size guide **G**



Royal box (RO)

Navy (NA)

Bottle green (BO)

Grey (GR)

Black (BK)



GT113 Knee pads

Sold in pairs • 100% rubber
• One size



new



Cargo trousers

Zip fly with hook and bar fastening • Two hip, two thigh and one back pocket • Flat front and belt loops • 245gsm 65% polyester/35% cotton
• Up to 60° wash • Suitable for industrial laundry

NM515 Men's • Sizes 28 - 54ins • Inside leg: Short (S) 29ins, Regular (R) 31ins, Tall (T) 33ins, Extra tall (A) 36ins • Size guide **A**

NF515 Women's • Sizes 6 - 26 • Inside leg: Short (S) 27ins, Regular (R) 29ins, Tall (T) 31ins, Extra tall (A) 33ins • Size guide **G**



Royal box (RO)

Navy (NA)

Bottle green (BO)

Grey (GR)

Black (BK)



Royal box (RO)

Navy (NA)

Bottle green (BO)

Grey (GY)

Black (BK)

NM144 Essential men's heavy weight trousers

Durable and practical with smart sewn-in creases • Zip fly with hook and bar • Two hip pockets, one back pocket • Flat front and belt loops
• 300gsm 65% polyester/35% cotton • Up to 60° wash • Suitable for industrial laundry • Waist sizes 28 - 54ins • Inside leg: Short (S) 29ins, Regular (R) 31ins, Tall (T) 33ins, Extra tall (A) 36ins • Size guide **A**

TROUSERS AND HI-VIS

new



Hi-vis yellow (SY)



Hi-vis orange (OR)



Green (GR)



Blue (BL)

Pink (PI)

Red (RE)

SW22 Hi-vis waistcoat

Ideal for workers and site visitors • Double band and brace reflective tape • Velcro fastening • Conforms to **EN ISO 20471 class 2** • 100% polyester • Up to 40° wash • Sizes M - 5XL (orange M - 3XL) • Size guide **A**

SW22 Coloured waistcoat

Additional colours for a wider range of roles and wearers • Double band and brace reflective tape • Velcro fastening • Conforms to **EN471** conformant tape • 100% polyester • Up to 40° wash • Sizes S - 4XL • Size guide **A**



Hi-vis yellow (YE)



Hi-vis orange (OR)



Hi-vis yellow (YE)



Hi-vis orange (OR)



Hi-vis yellow (SY)

Hi-vis orange (OR)

NS77 Hi-vis polo shirt

Lightweight and comfortable • Contrast collar • Double band and brace reflective tape • Conforms to **EN ISO 20471 class 2** • 100% polyester • Up to 40° wash • Sizes M - 4XL • Size guide **A**

NS75 Hi-vis long sleeved waistcoat

A sleeved option offers a higher visibility level • Velcro fastening • Double band and brace reflective tape • Conforms to **EN ISO 20471 class 3** • 100% polyester • Up to 40° wash • Sizes M - 3XL (orange M - 2XL) • Size guide **A**

SW30 Hi-vis over trousers

Increase visibility and stay dry • Elasticated waist • Access to trouser pockets • Adjustable ankles • Conforms to **EN ISO 20471 class 1, EN343 class 3** • PU coated polyester • Up to 40° wash • Sizes S - 4XL (orange S - 2XL) • Size guide **A**





FW537 Toffeln UltraLite clogs

Slip-resistant and **anti-static** clogs new

FW537 Toffeln UltraLite clogs

Modern design with improved comfort with soft leather upper and insoles • Lightweight sole material technology • Flexible, anti-static slip-resistant sole • Shock absorbing heel • Conforms to **EN20347** • Navy with side vent holes • Sizes 3-12, shiny pink, shiny purple, shiny blue, shiny silver and black/grey 3 - 8 • Size guide **M**



Machine **washable** up to 40°C

FW516 Toffeln EziKlog

Excellent slip resistance • Lightweight • Adjustable heel strap • Closed-in heel • Shock absorbent anti-static heel • Side vents specially designed to prevent fluid penetration • Exceeds **EN20347 SRC** • Machine washable up to 40°C • Anti-microbial • Recyclable • Hot pink, pink, purple, orange and lime sizes 3 - 8, pale blue size 3 - 11, navy, white and black sizes 3 - 12 • Size guide **M**



FW538 Toffeln Klima Flex clogs

Lightweight and washable clog ideal for use in areas where spills and fluids are common • Cushion as you walk • Slip-resistant sole • Side vents • Antistatic sole • PU comfort sole • Machine washable up to 80°C • Conforms to **CE EEC 89/686/EEC** • Sizes Navy 2 - 15, Off white 4 - 12 • Size guide **M**



FW17 Safety shoe

200 joule steel toe cap • Steel midsole • Ergonomic padded collar • Single density lightweight PU sole • Anti-static • Resistance to impact, compression and abrasion • Absorption of energy in the heel • Resistance to hydrocarbons, oils and solvents • Full grain water-repellent leather • Conforms to **EN20345 S3 SRC** • Sizes 3 - 13 • Size guide **M**



FW520 Women's safety shoe

Fast drying breathable lining • Lightweight • 200 joule steel toe cap • PU sole • Full grain leather upper • Conforms to **EN20345 S1 SRC** • Sizes 1 - 8 • Size guide **M**



FW18 Safety boot

200 joule steel toe cap • Steel midsole • Ergonomic padded collar • Single density lightweight PU sole • Anti-static • Resistance to impact, compression and abrasion • Absorption of energy in the heel • Resistance to hydrocarbons, oils and solvents • Full grain water-repellent leather • Conforms to **EN20345 S3 SRC** • Sizes 3 - 13 • Size guide **M**



FW507 Blackrock safety slip-on shoe

Convenient and comfortable • Excellent grip • Steel toe cap 200 joule impact • Polyurethane sole • Shock absorbent heel • Anti-static sole resistant to solvents, oils and temperatures up to 200°C • Water resistant • Micro fibre • Up to 40° wash • Conforms to **EN20345 S2 SRC** • Sizes 3 - 13 • Size guide **M**



FW500 Blackrock safety shoe

Excellent grip • Steel toe cap 200 joule impact • Polyurethane sole • Shock absorbent heel • Anti-static sole resistant to solvents, oils and temperatures up to 200°C • Water resistant • Micro fibre • Conforms to **EN20345 S2 SRC** • Sizes 3 - 13 • Size guide **M**



What we can do **for you**

Presenting the right image to your customers can give you that all-essential edge.

Whether you need workwear for construction, manufacturing, engineering, production, hotel and catering, retail, beauty or medical roles - we can offer you the widest choice of styles, colours and sizes all in one place.

With innovative ideas to make your working life even more practical, safe and comfortable - your staff will look smart and professional in whatever role they fulfill.

All the products in this catalogue are:

- Chosen by experienced product managers to be the best in class
- Superb quality - carefully designed and well made to withstand even the harshest working conditions
- Compliant with all the latest Health and Safety regulations, where applicable
- Independently tested to ensure colour fastness and durability - capable of withstanding industrial laundering.
- Available from our UK warehouse for fast delivery to you
- Offered in a wide range of colours, sizes and lengths
- Our comprehensive range includes businesswear, shirting and suiting, outerwear, footwear and PPE - to ensure you are covered from head to toe in a smart, fit-for-purpose uniform.



Personalise your workwear

Embroidery

It is possible to digitise and convert any type style or logo into high quality, durable embroidery in hundreds of colours.

Printing

If you are looking for large volumes of garments to be personalised, it could be better for you to consider having your garments printed, with bold, permanent full-colour images, logos and designs. The choice of finish will depend on your needs, the fabric and volume required.

Claim back tax on your workwear

In order to identify your workwear as being tax-deductible, it is possible to create woven badges and labels which can be sewn to the garments.



Embroidery

Direct embroidery, suitable for most garments. No minimum quantities.



Screen printing

Ink-based application, ideal for complex designs and large quantities.



Vinyl printing

Reflection free. Heat applied to garment. Best for simple colour logos with small quantities.



Digital printing

Heat applied transfers. Unlimited colours. Suitable for detailed designs.

SCRUB TOP



Stretch body panels
(Black panel on coloured
garments and white on white)

Innovative design enabling freedom of movement

Stretch scrub top

Mock wrap front neck with contrast bound edges • Stretch jersey side body panels • Shaped front patch pockets with contrast bound edges • Main fabric: 195gsm 65% polyester/35% cotton, side panels: 240gsm 70% viscose/25% polyamide/5% elastane • Up to 60° wash

NF43 Women's • Single action back for ease of movement
• Back length: 70 - 76cm (increases with size) • Sizes XS - 4XL
• Size guide **G**

NM43 Men's • Back length: 75 - 80cm (increases with size) • Sizes S - 4XL • Size guide **E**



White/white
(WH) NF43 only



White/sailor navy
(WN) NF43 only



White/pink
(WP) NF43 only



Metro blue/
sailor navy (MV)



Blade blue/
lime (BE)



Sailor navy/
metro blue (OH)



Pink/black
(KB)



Black/pink
(BP)

Alexandra



Embroider it!

Embroidery is a fast and effective way to create instant, quality branding on your workwear.

